

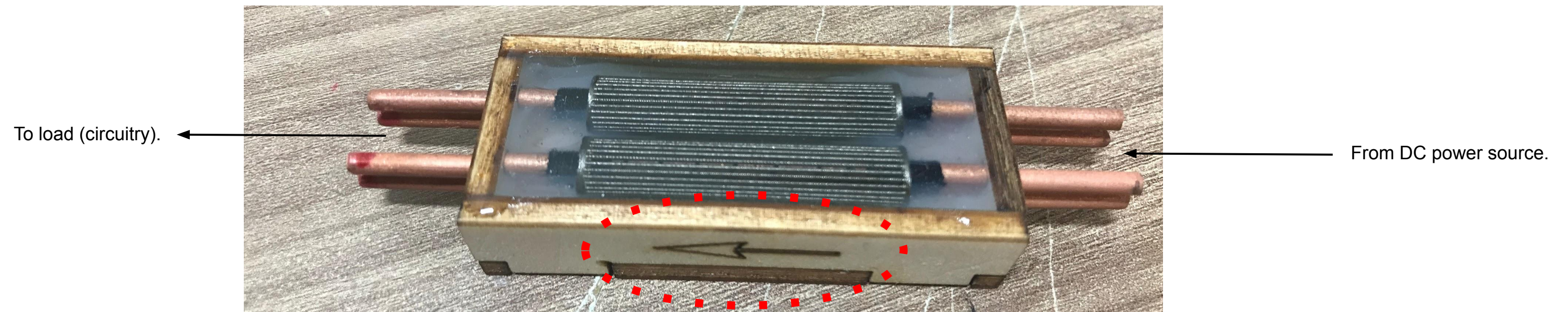
Connect all four copper bars to your single polarity wire. You can squeeze them together around the wire, but please bend them only once.

Find the arrows on the sides.

Connect all four copper bars to your single polarity wire. You can squeeze them together around the wire, but please bend them only once.

Please solder one end, then let it cool. Only then, solder the other end.

Positive DC line to be connected this way:



Note direction of arrow!

Neutral (return) line to be connected this way:



Note direction of arrow!